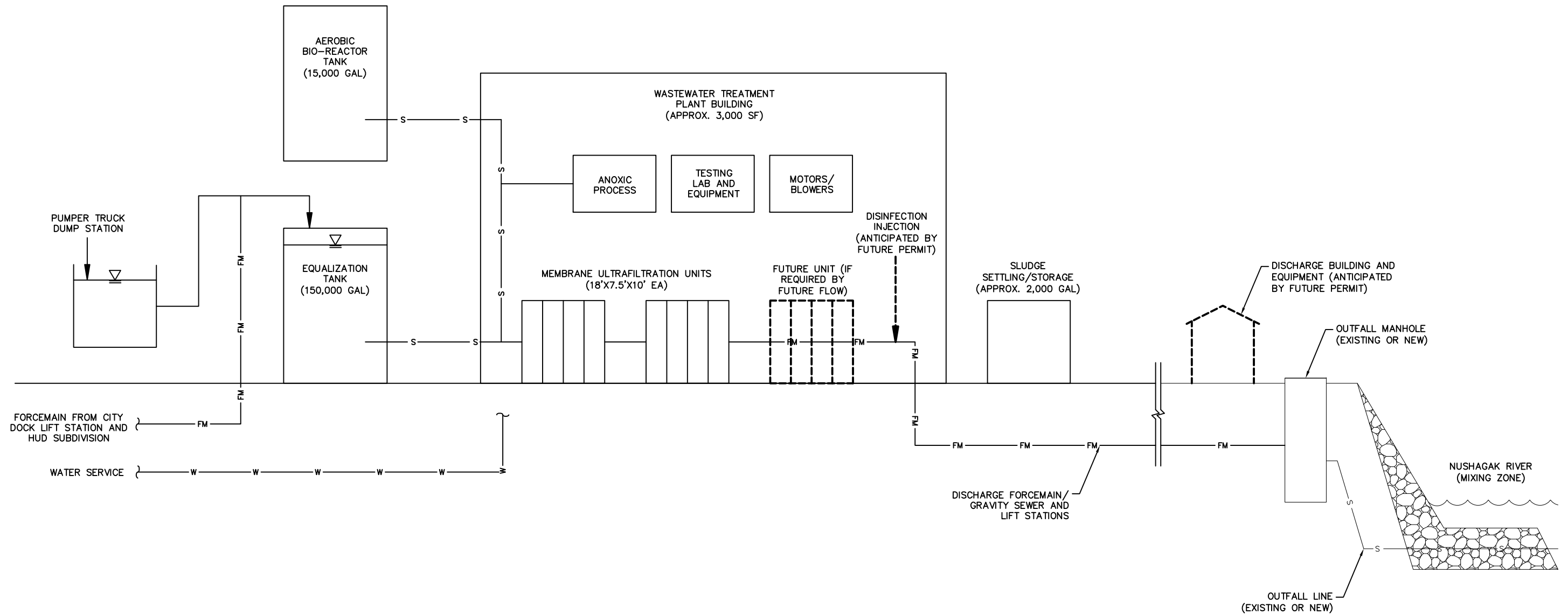


**LEGEND**

- EXISTING
- PLANNED
- FUTURE (ANTICIPATED BY FUTURE PERMIT)



**FIGURE 4**  
**DILLINGHAM, AK**  
**WASTEWATER TREATMENT RELOCATION STUDY**  
**MBR TREATMENT PROCESS**

	DATUM:	DATE <u>02/14/20</u>	SHEET <b>4</b> of
	PROJECTION:	DWN. <u>JDW</u>	
	PROJECT No. 32200002	SCALE <u>NTS</u>	APPRVD. <u>DWB</u>

Drawing: K:\JOBS\32200002 DLG LAGOONSTUDY\ACAD-DESIGN\02\_STUDY FIGURES\FIG. 4 - MBR TREATMENT PROCESS.DWG - Layout: FIG. 4  
 User: DBEISWENGER Feb 14, 2020 - 11:22am Xref: BR\_11X17L.DWG - Images:

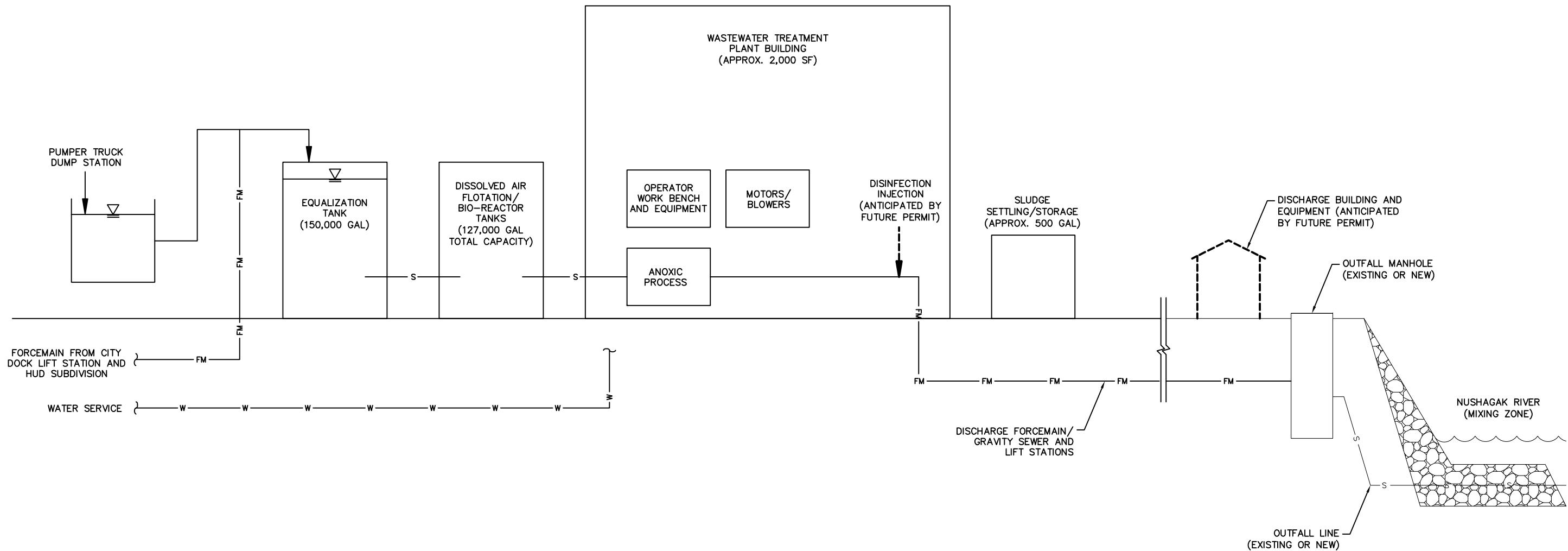
Drawing: K:\JOBS\32200002 DLG LAGOONSTUDY\ACAD-DESIGN\02\_STUDY FIGURES\FIG. 5 - MBBR TREATMENT PROCESS.DWG - Layout: FIG. 5  
 User: DBEISWENGER Feb 14, 2020 - 11:24am Xref: BR\_11X17L.DWG - Images:

**LEGEND**

EXISTING \_\_\_\_\_

PLANNED \_\_\_\_\_

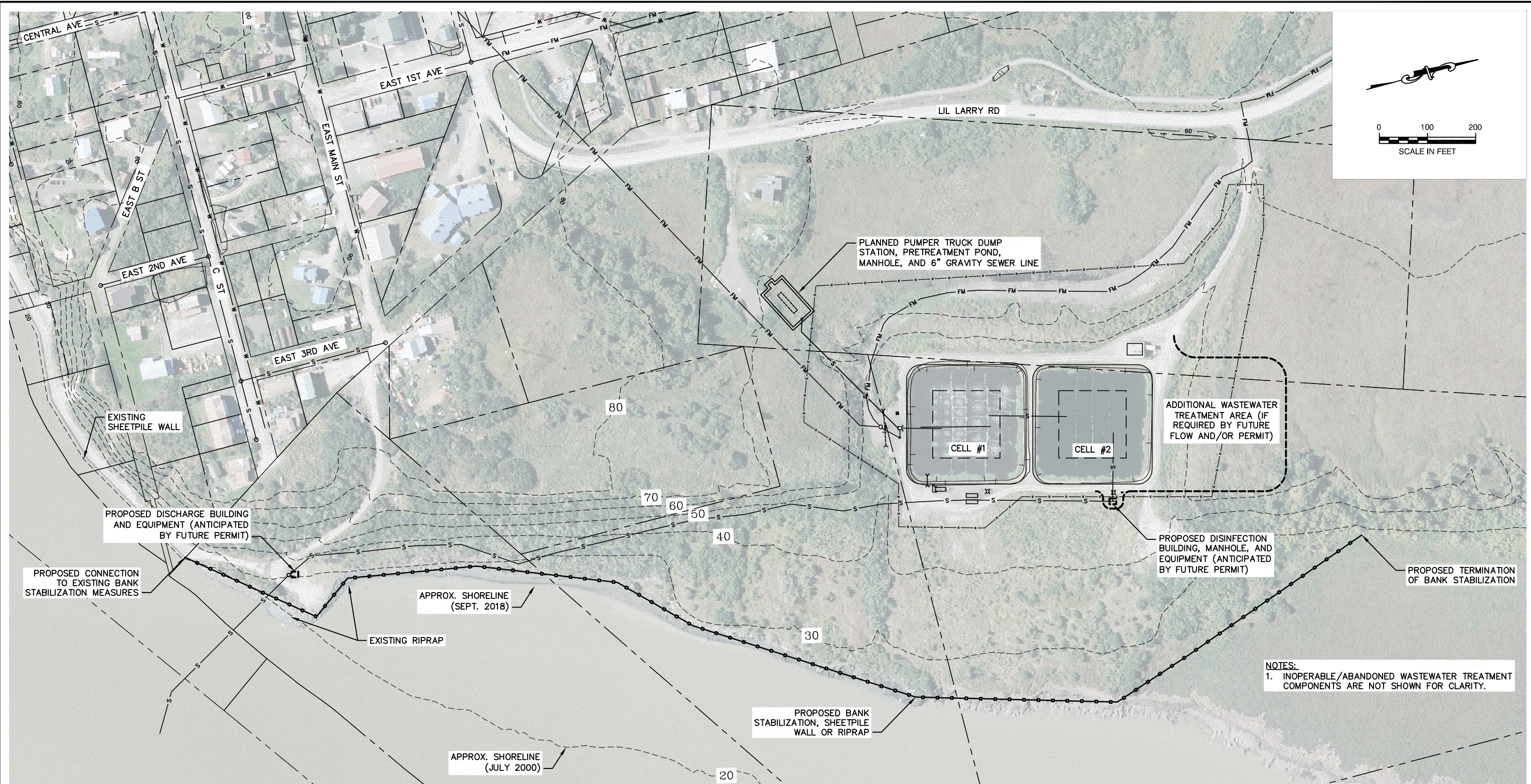
FUTURE (ANTICIPATED BY FUTURE PERMIT) - - - - -



<b>FIGURE 5</b> DILLINGHAM, AK WASTEWATER TREATMENT RELOCATION STUDY <b>MBBR TREATMENT PROCESS</b>			
	DATUM:	DATE	02/14/20
	PROJECTION:	DWN.	JDW
	PROJECT No.	SCALE	NTS
	32200002	APPRVD.	DWB
			SHEET <b>5</b> of -

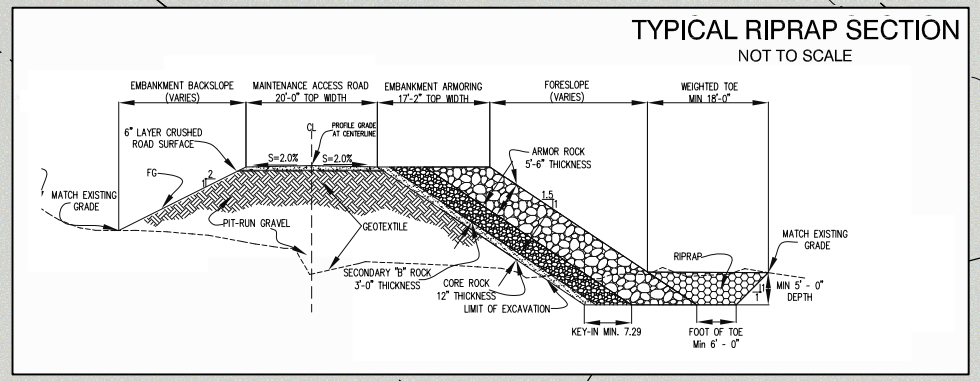
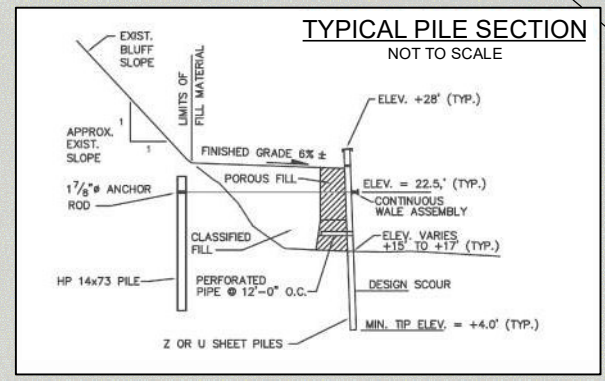


Drawing: K:\JOBS\32200002 DLG LAGOONSTUDY\ACAD-DESIGN\02\_STUDY FIGURES\FIG. 6 - SITE 1 SITE PLAN\DWG - Layout: FIG. 6  
 User: DBEISWENGER Feb 14, 2020 11:27am Xref: BR\_11X17L.DWG DLG BASE\_FINAL.DWG DLG TOPO.DWG - Images: PILE.JPG RIPRAP.JPG DILLINGHAM\_9-08-2018.TIF KANAKANAK\_9-08-2018.TIF



**NOTES:**  
 1. INOPERABLE/ABANDONED WASTEWATER TREATMENT COMPONENTS ARE NOT SHOWN FOR CLARITY.

SOURCE IMAGE: QUANTUM SPATIAL, SEPT. 8, 2018

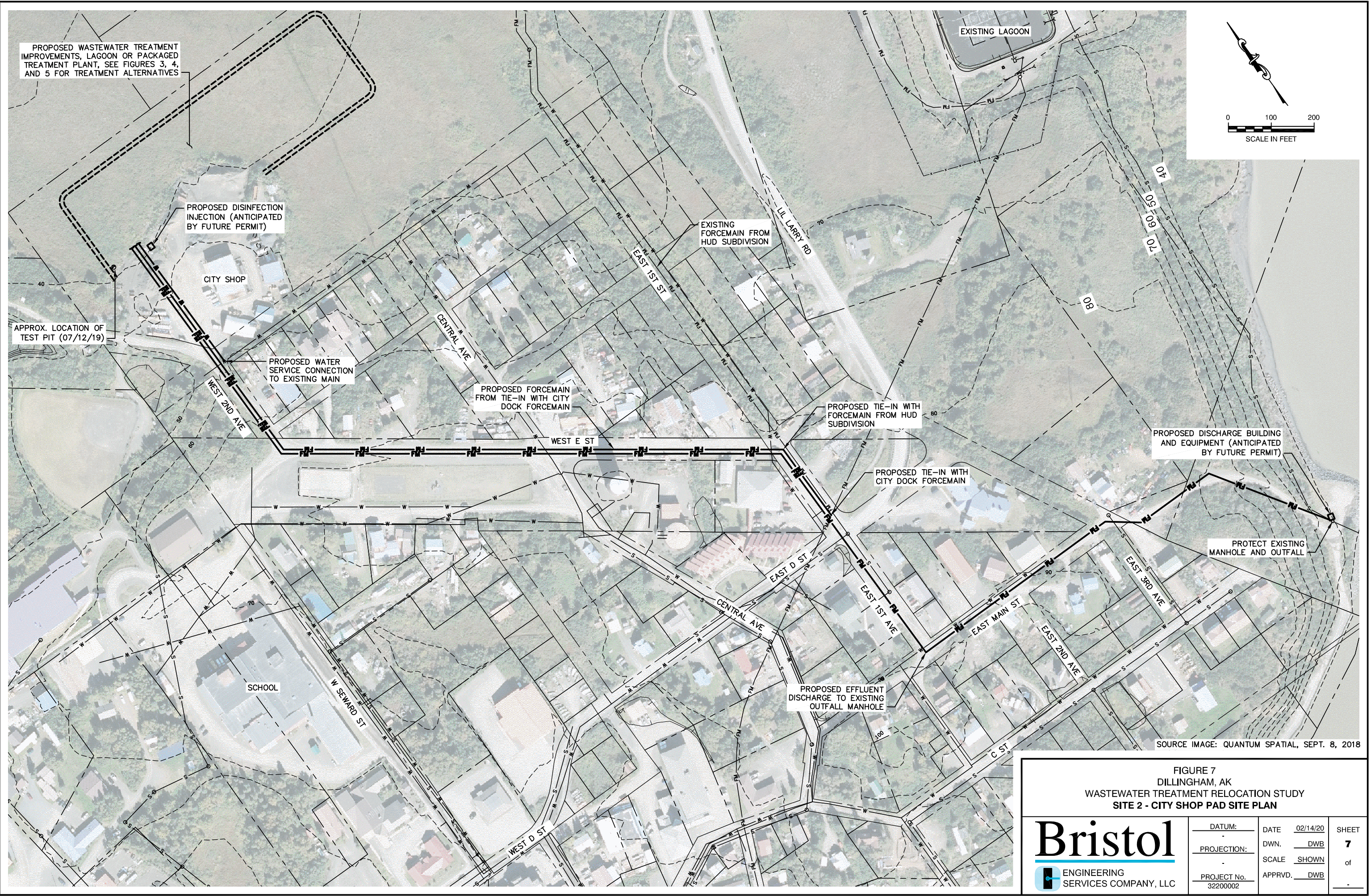


**FIGURE 6**  
**DILLINGHAM, AK**  
**WASTEWATER TREATMENT RELOCATION STUDY**  
**SITE 1 - DEFEND IN PLACE SITE PLAN**

<b>Bristol</b> ENGINEERING SERVICES COMPANY, LLC	DATUM:	DATE	02/14/20	SHEET <b>6</b> of -
	PROJECTION:	DWN.	DWB	
	PROJECT No. 32200002	SCALE	SHOWN	
	APPRVD.	DWB		



Drawing: K:\JOBS\32200002 DLG LAGOONSTUDY\ACAD-DESIGN\02\_STUDY FIGURES\FIG. 7 - SITE 2 SITE PLAN.DWG - Layout; FIG. 7  
 User: DBEISWENGER Feb 14, 2020 - 11:30am Xrefs: BR\_11X17L.DWG DLG BASE\_FINAL.DWG DLG TOPO.DWG - Images: DILLINGHAM\_9-08-2018.TIF KANAKANAK\_9-08-2018.TIF



<b>FIGURE 7</b> DILLINGHAM, AK WASTEWATER TREATMENT RELOCATION STUDY SITE 2 - CITY SHOP PAD SITE PLAN			
	DATUM:	DATE	02/14/20
	PROJECTION:	DWN.	DWB
	PROJECT No.	SCALE	SHOWN
32200002	APPRVD.	DWB	
		SHEET	<b>7</b>
			of
			-



Drawing: K:\JOBS\32200002 DLG LAGOONSTUDY\ACAD-DESIGN\02\_STUDY FIGURES\FIG. 8 - SITE 3 SITE PLAN.DWG - Layout: FIG. 8  
 User: DBEISWENGER Feb 14, 2020 - 11:33am Xrefs: BR\_11X17L.DWG DLG BASE\_FINAL.DWG DLG TOPO.DWG - Images: DILLINGHAM\_9-08-2018.TIF KANAKANAK\_9-08-2018.TIF

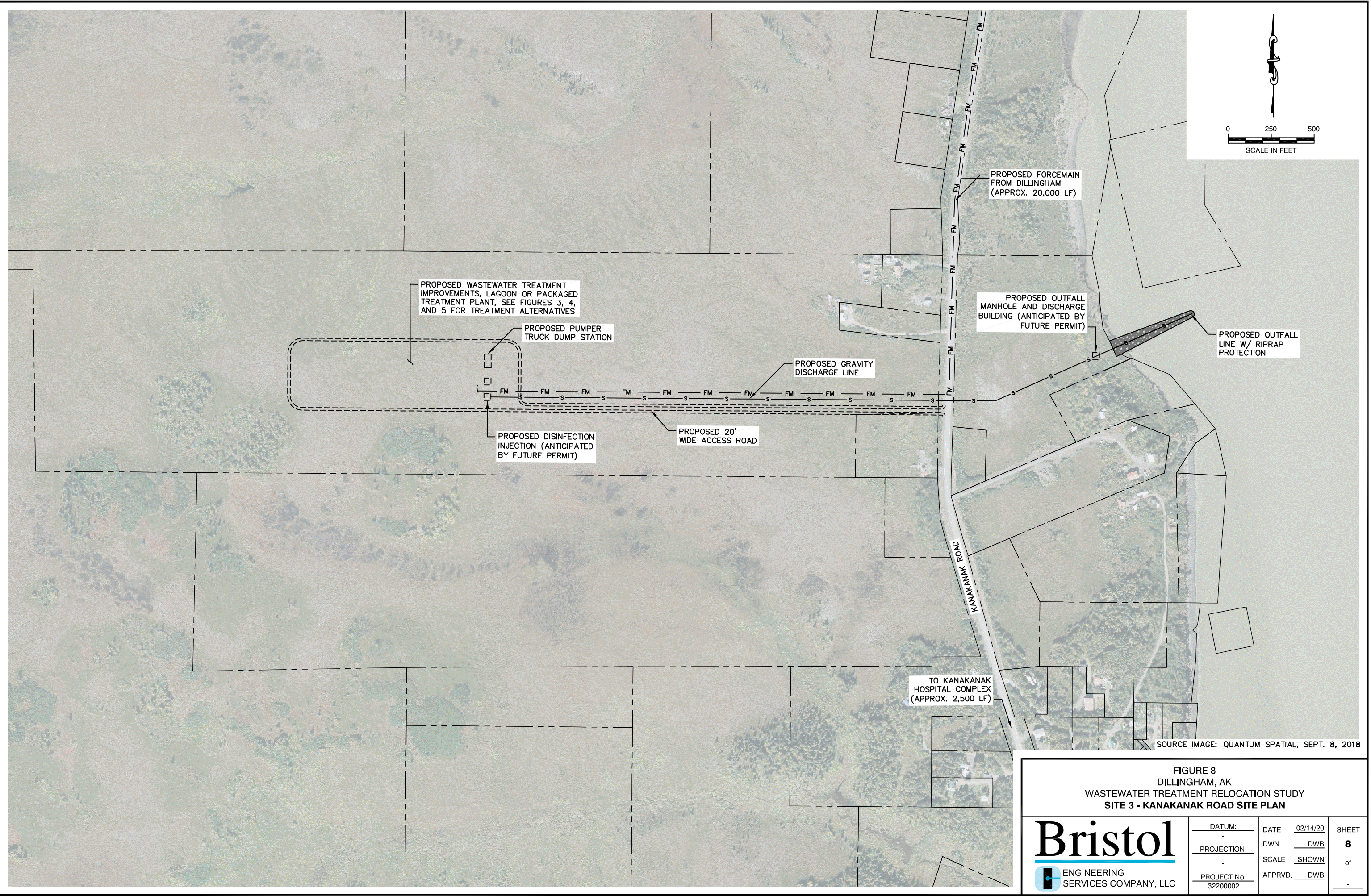


FIGURE 8  
 DILLINGHAM, AK  
 WASTEWATER TREATMENT RELOCATION STUDY  
 SITE 3 - KANAKANAK ROAD SITE PLAN

	DATUM:	DATE	02/14/20	SHEET
	PROJECTION:	DWN.	DWB	<b>8</b>
	PROJECT No.	SCALE	SHOWN	of
32200002	APPRVD.	DWB	-	